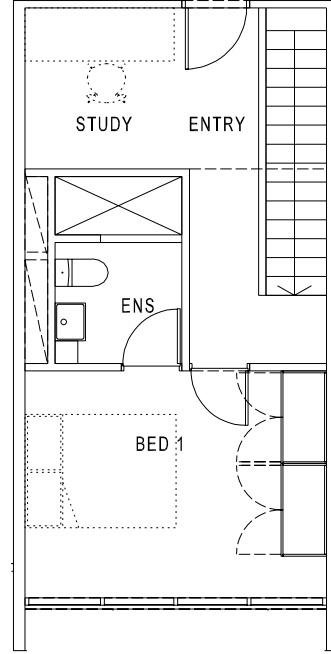
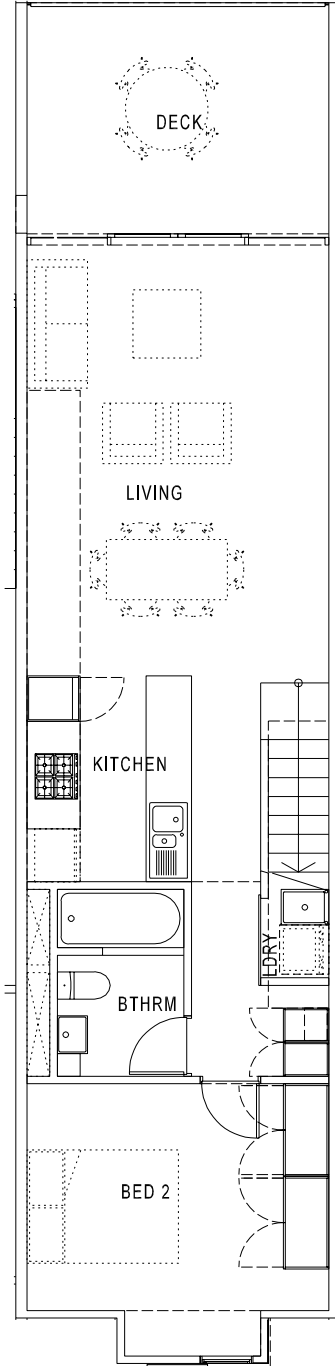




W4 APARTMENTS  
 BY DONOVAN | HILL  
 DISPLAY CENTRE  
 8-16 SKYRING TCE  
 TENERIFFE QLD 4005  
 PO BOX 1376  
 NEW FARM QLD 4005  
 TELEPHONE 07 3252 2133  
 FACSIMILE 07 3252 2344  
 INFO@WFOUR.COM.AU  
 WWW.WFOUR.COM.AU

# ZUPPER



<b>unit no. 602, 603, 605, 606,          608, 609, 611, 612, 614, 619,          620, 622, 623, 625 &amp; 626</b>	2 BEDROOM + STUDY 2 BATHROOM	LEVEL: 5 & 6	INTERNAL AREA	89.0	SQM
			BALCONY AREA	13.0	SQM
			TOTAL AREA	102.0	SQM

The particulars are setout as a general outline only. This representation is intended as a guidance for intending purchaser(s) and does not constitute an offer or contract. Intending purchaser(s) should satisfy themselves by inspecting or otherwise to the correctness of each description or reference. Apartment layout and area subject to detailed design and construction requirements. Plans exclude drop ceilings required for services. Plans require structural and services co-ordination and therefore are subject to change.